

Integrating Environment Perspectives into Recovery:

Experiences from Cyclone Nargis

Click the image
decompressor
are needed to see this picture.

IRP Special Event, Global Platform
Geneva, 17 June 2009

Post-conflict and disaster Management Branch, United Nations
Environment Programme

Environment and Recovery

Environmental Needs Assessment (ENA) is a critical part of Post-Disaster Needs Assessment (PDNA) as it helps the recovery process to:

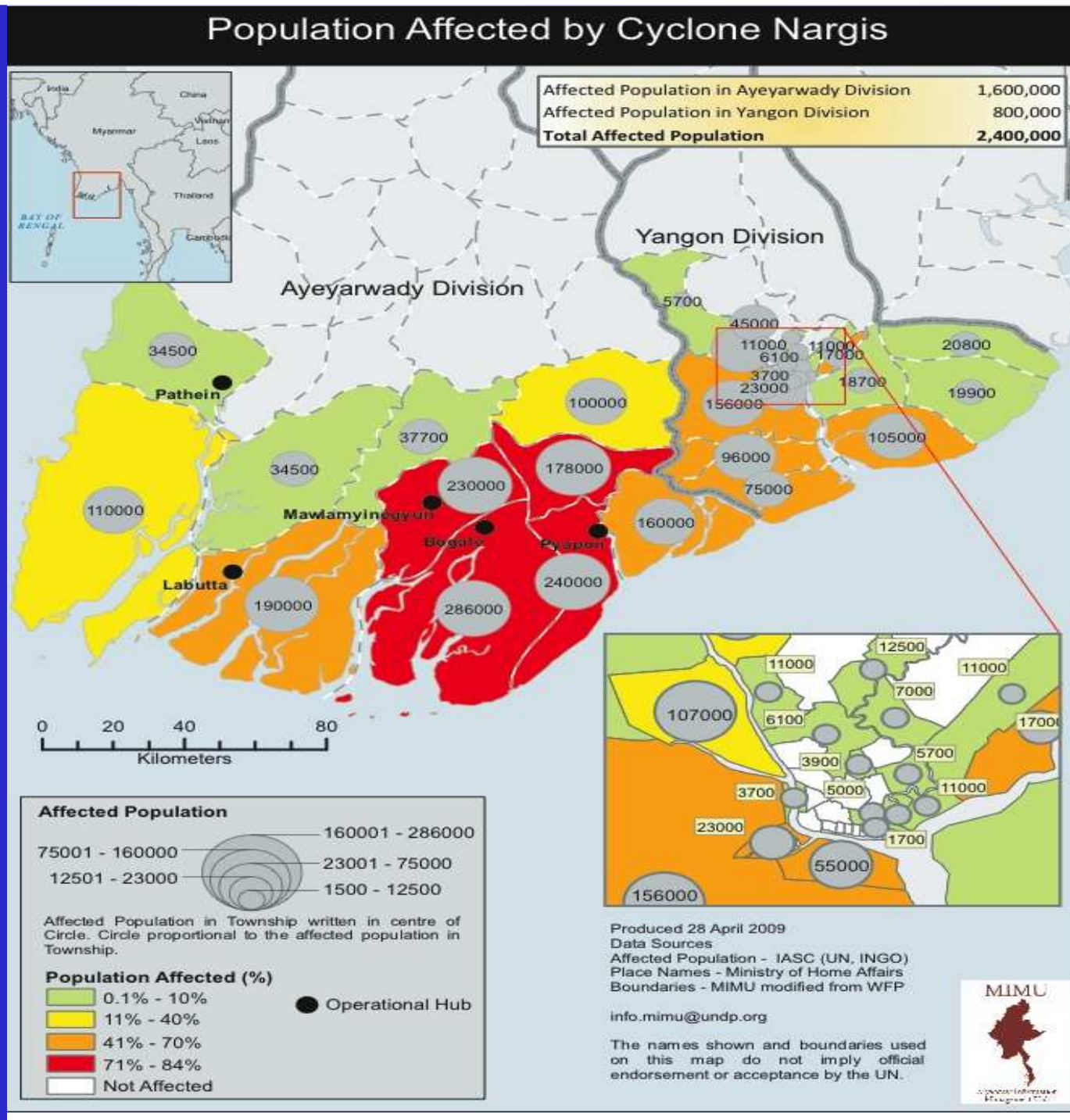
- ✓ Adopt a strategic and holistic approach;
- ✓ Identify long-term needs and priorities for affected communities;
- ✓ Restore livelihoods;
- ✓ Address cross-cutting issues such as protection for vulnerable groups and environment.

QuickTime™ and a decompressor are needed to see this picture.

QuickTime™ and a decompressor are needed to see this picture.

Nargis Impacts

- 140,000 killed
- 450,000 homes destroyed
- 4,000 schools damaged or destroyed
- 75% of health facilities destroyed



What were the major environmental impacts of Cyclone Nargis?

- ❖ Damaged 35,000 ha of natural and planted mangroves and other trees;
- ❖ Pollution of surface and groundwater sources - 43% of ponds damaged;
- ❖ Salination and erosion of agricultural lands - 63% of paddy flooded by storm surge;
- ❖ Impact on fisheries by winds & storm surge;
- ❖ Sedimentation of rivers;
- ❖ Waste generation - debris from shelters, jetties

QuickTime™ and a decompressor are needed to see this picture.

QuickTime™ and a decompressor are needed to see this picture.

Why were the environmental impacts of Cyclone Nargis so significant for recovery?

The environment and natural resources underpin the livelihoods of the people in Myanmar:

- ✓ Agriculture - paddy rice and other cash crops;
- ✓ Subsistence home gardens;
- ✓ Fisheries - commercial and subsistence;
- ✓ Forest resources - timber, fuel, food & incomes;
- ✓ Secondary Natural resources-based industries such as fish processing, etc;
- ✓ Salt production.

QuickTime™ and a decompressor are needed to see this picture.

QuickTime™ and a decompressor are needed to see this picture.

Experiences from Cyclone Nargis

Challenges: (1) Integration of environment into the recovery process

- ✓ Government plans are sectoral;
- ✓ International community responses focus on mandate and strengths of agencies;
- ✓ Cluster system encourages fragmentation;
- ✓ Difficulties in coordinating Government and international responses;
- ✓ Environment as cross-cutting issue tends to fall through the cracks.

QuickTime™ and a decompressor are needed to see this picture.

QuickTime™ and a decompressor are needed to see this picture.

Experiences from Cyclone Nargis

Challenges: (2) Fostering synergies between environment and sustainable livelihoods

- ✓ Environment is often seen as a single issue, e.g. mangroves or biodiversity;
- ✓ Need for alternatives to exploitation of natural resources, such as renewable energy;
- ✓ Balance conservation and income objectives;
- ✓ Lack of awareness of sustainable development;
- ✓ Role of Government to ensure sustainability.

QuickTime™ and a decompressor are needed to see this picture.

QuickTime™ and a decompressor are needed to see this picture.

QuickTime™ and a decompressor are needed to see this picture.

Experiences from Cyclone Nargis

Challenges: Funding Environment initiatives

- ✓ Most funding in early stages is for basic needs - food, water, shelter;
- ✓ Environment not seen as a “productive” sector that contributes to livelihoods;
- ✓ Government plans focus on restoring production - agriculture, forestry, fisheries.

QuickTime™ and a decompressor are needed to see this picture.

Experiences from Cyclone Nargis

Best Practices: (1) Government Responses

Government plans for recovery and reconstruction:

- ✓ Emphasis on "Building Back Better";
- ✓ Plans are sectoral - only some mention environment ;
- ✓ Emphasis on Government actions.

Myanmar Action Plan for disaster risk reduction (MAPDRR):

- ✓ Learns from Nargis experiences;
- ✓ Addresses all natural hazards;
- ✓ Has a national focus
- ✓ Environment is recognized as a cross-cutting issue and is integrated into DRR plans.



Experiences from Cyclone Nargis

Best Practices: (2) Environment and PONREPP

International Response - "Post-Nargis Recovery and Preparedness Plan (PONREPP):

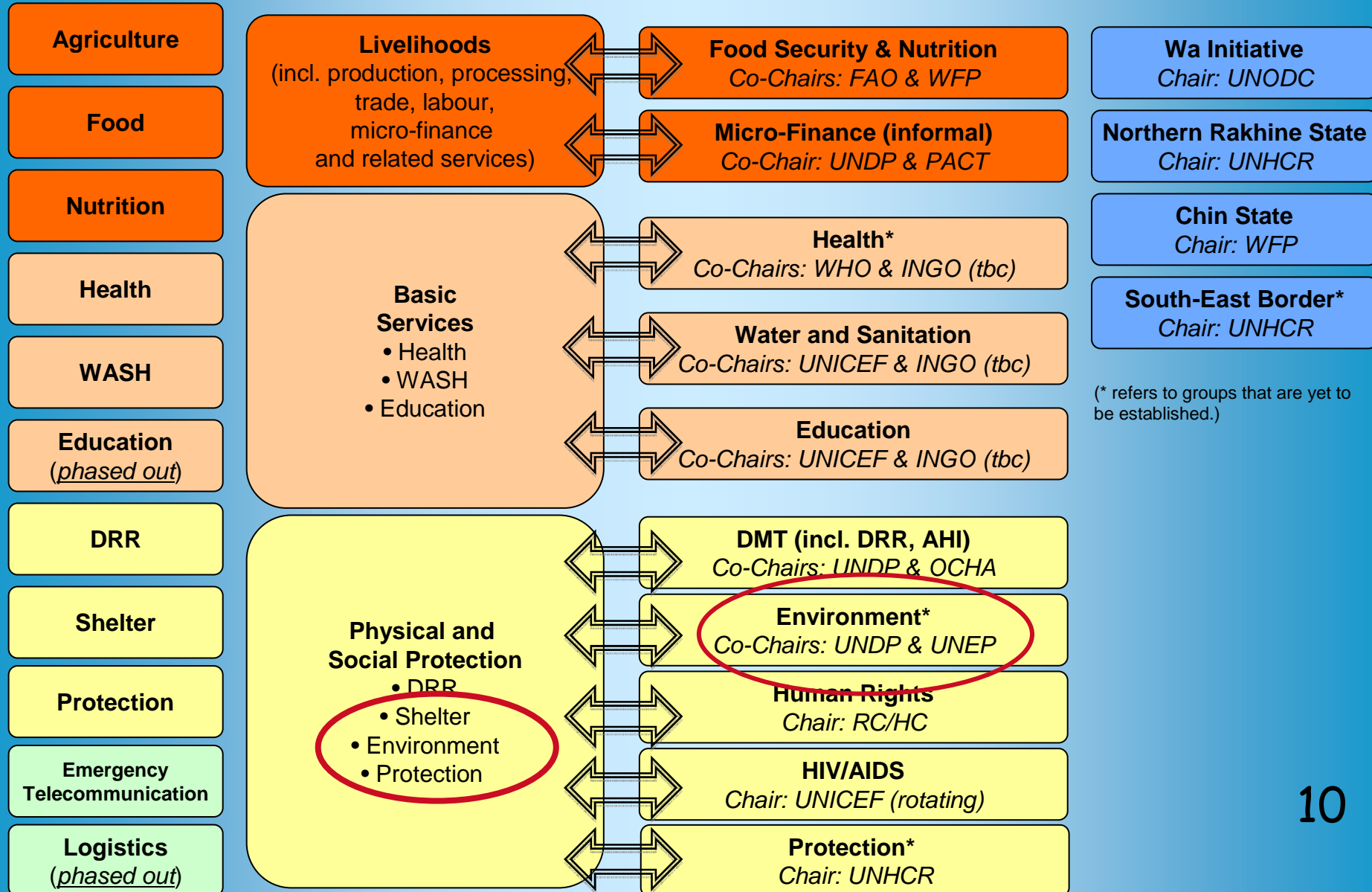
- ✓ Emphasis on "Productive, Healthy and Protected lives" for communities;
- ✓ Environment integrated into livelihoods, shelter, water and DRR;
- ✓ Revised working groups to replace clusters recognize environment as a cross-cutting issue:

**Clusters (Delta)
Phasing Out**

**PONREPP Recovery Groups
(Delta)
Phasing In**

**Thematic Groups
(nation-wide)
Future**

**Geographic
Coordination
Future**



(* refers to groups that are yet to be established.)

Experiences from Cyclone Nargis

Best Practices: (3) Proposed project for Environment, Livelihoods, & DRR:

Goal: promote sustainable livelihoods and DRR in the Nargis-affected areas through:

- ✓ Component One: community-based environment and natural resource management for sustainable livelihoods and disaster risk reduction in the Nargis-affected areas;
- ✓ Component Two: An enabling framework of laws, policies, and strengthened institutions at national and local administration levels;
- ✓ Component Three: strengthened information & monitoring systems.



Experiences from Cyclone Nargis

Thank You

QuickTime™ and a
decompressor
are needed to see this picture.

QuickTime™ and a
decompressor
are needed to see this picture.

QuickTime™ and a
decompressor
are needed to see this picture.