



**ORGANIZATIONAL
AND
INSTITUTIONAL
ARRANGEMENTS**

**NO INSTITUTION
EXISTED BUT
CHALLENGES
WERE ENORMOUS**

Challenges

- **Absence of disaster management organization**
- **Vast affected areas & dispersed inhabitations**
- **Inaccurate damage assessment**
- **Inadequate resources; incremental employment**
- **Blocked roads & traffic congestion**
- **Handling large air traffic, relief goods**

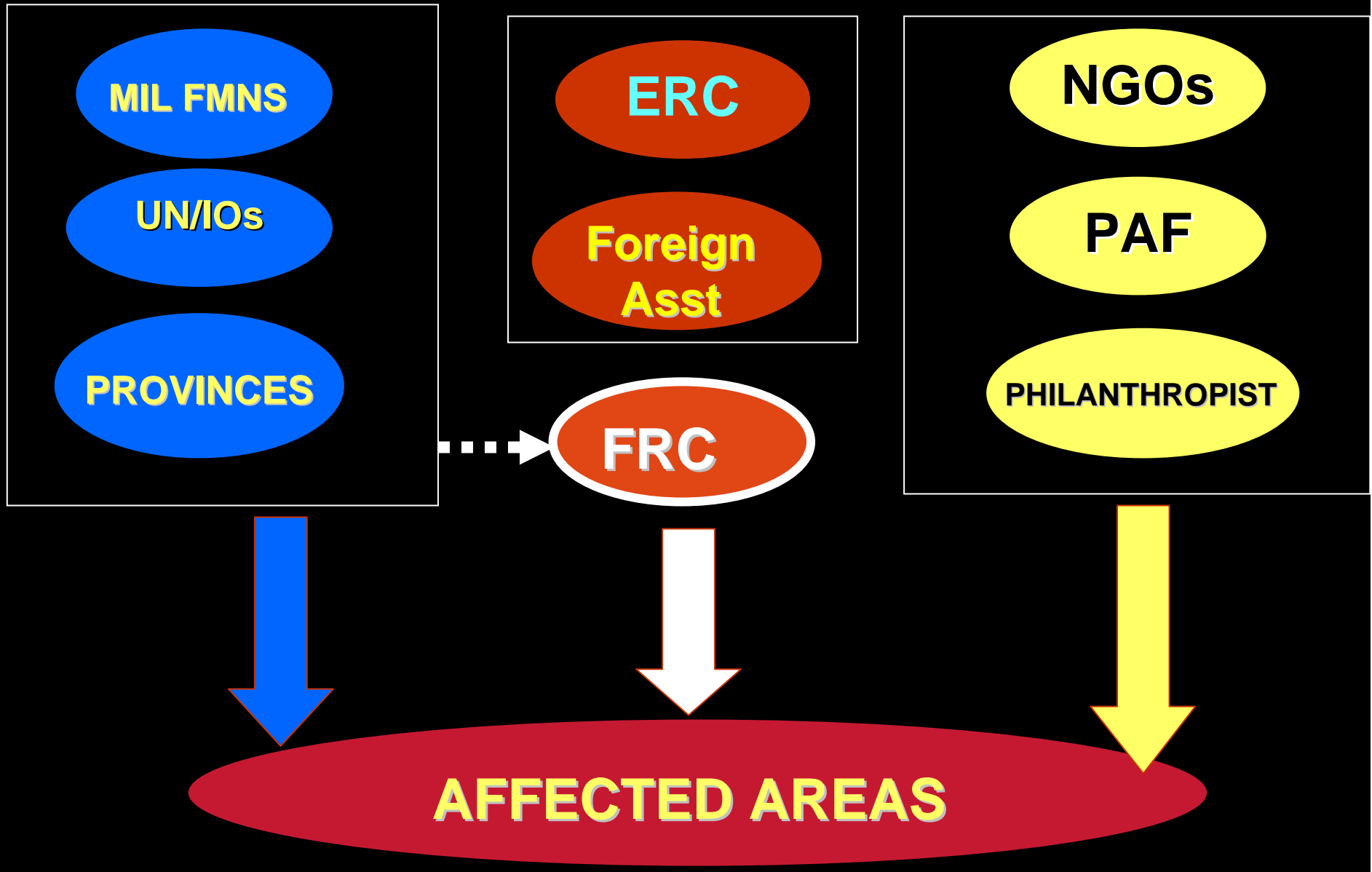
HOW TO COMBAT THE SITUATION

Response to the Earthquake

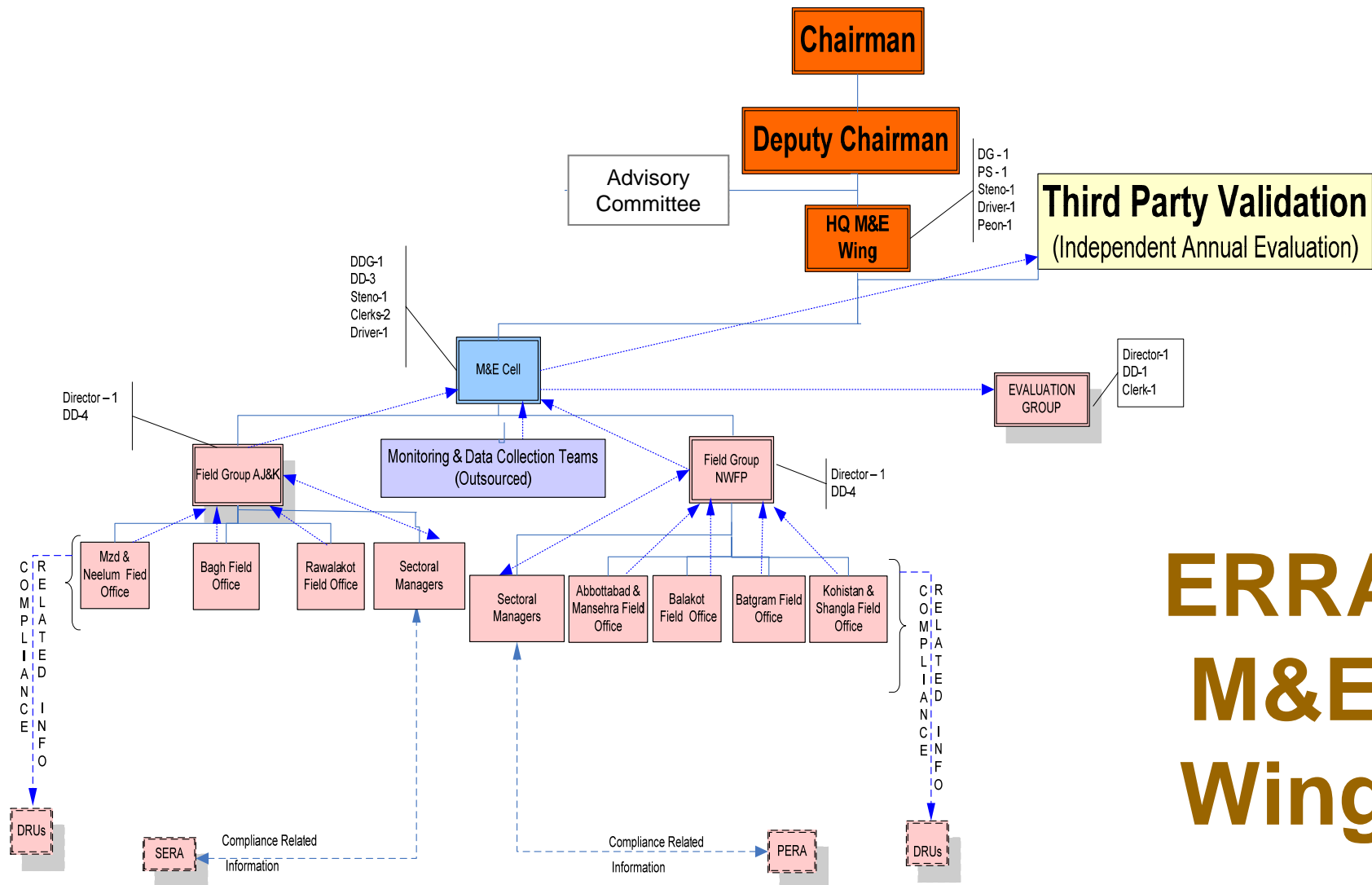
- **Immediate**
 - Rescue and relief operations
 - Crisis management, damage assessment / control
 - Maintenance / restoration of infrastructure
- **Short-Term**
 - Sustaining population and displaced persons
 - Supplementing local response capacities
 - Revival - civil administration & essential services
- **Mid-Term**
 - Early Recovery Operations
- **Long-Term**
 - Reconstruction and Rehabilitation

GOVT CREATED TWO
INSTITUTIONS NAMELY
FEDERAL RELIEF
COMMISSION AND
EARTHQUAKE
RECONSTRUCTION AND
REHABILITATION
AUTHORITY

RELIEF CHANNELS

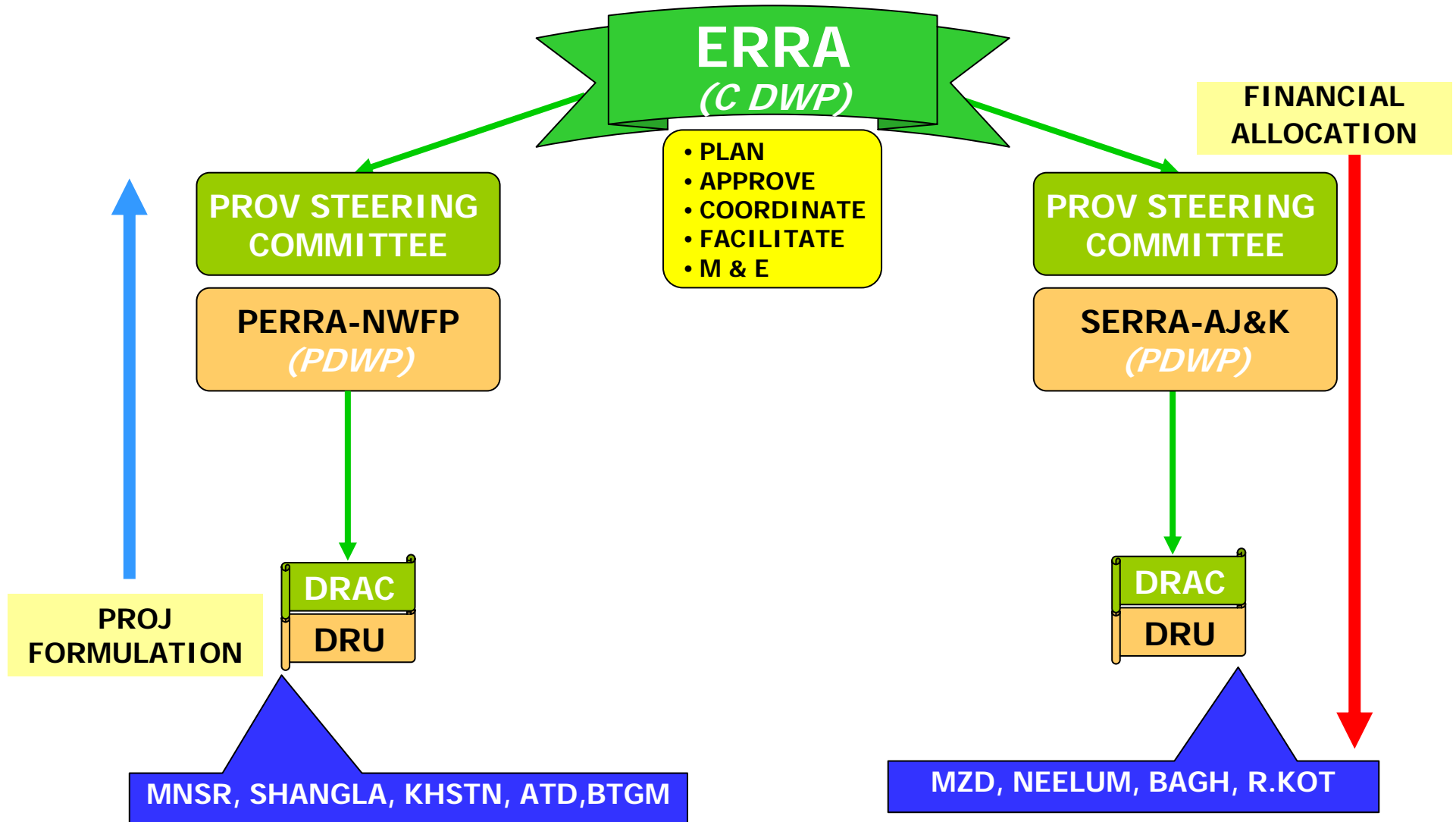




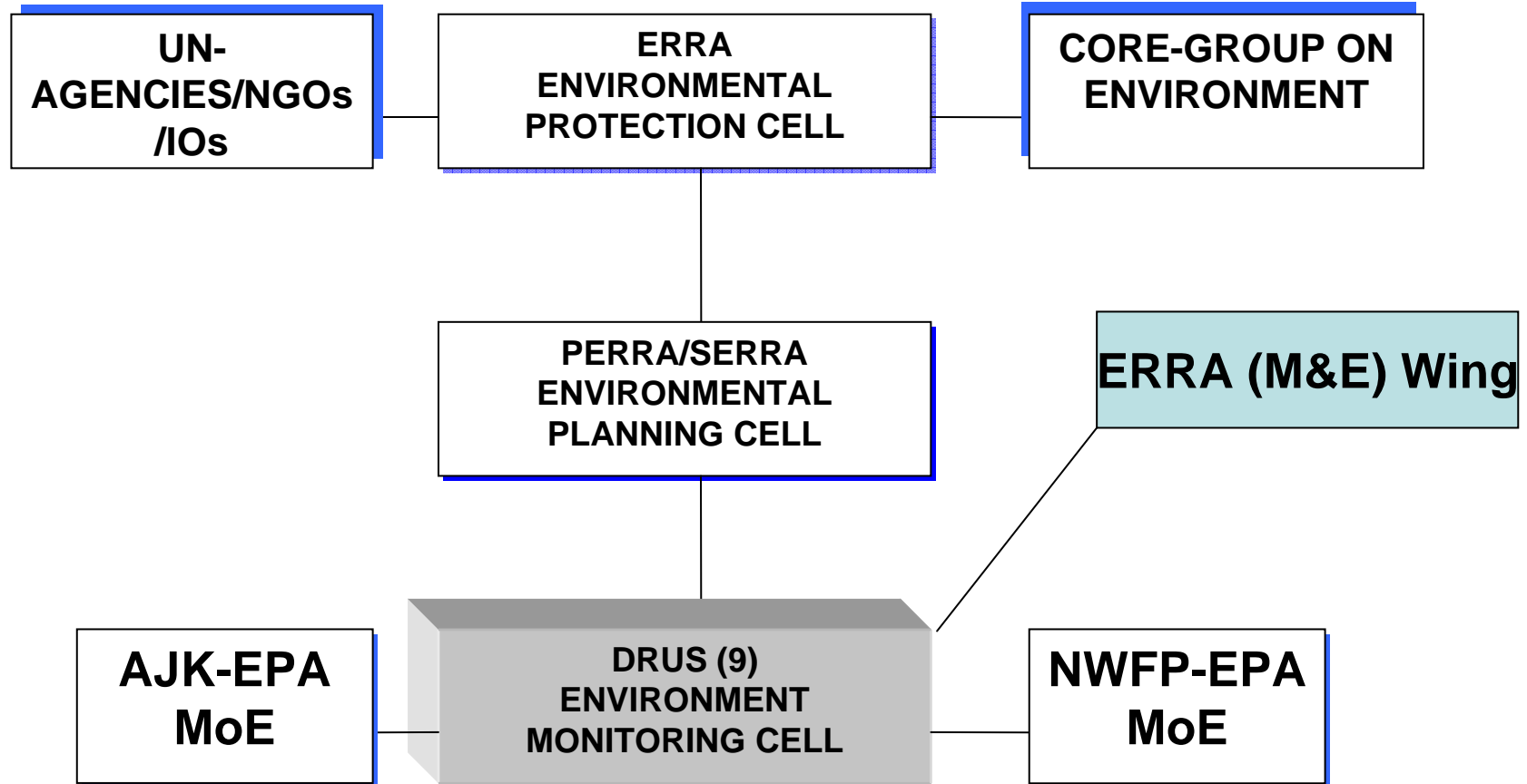


ERRA M&E Wing

Functional Structure



ORGANIZATIONS & MANAGEMENT



NDMA